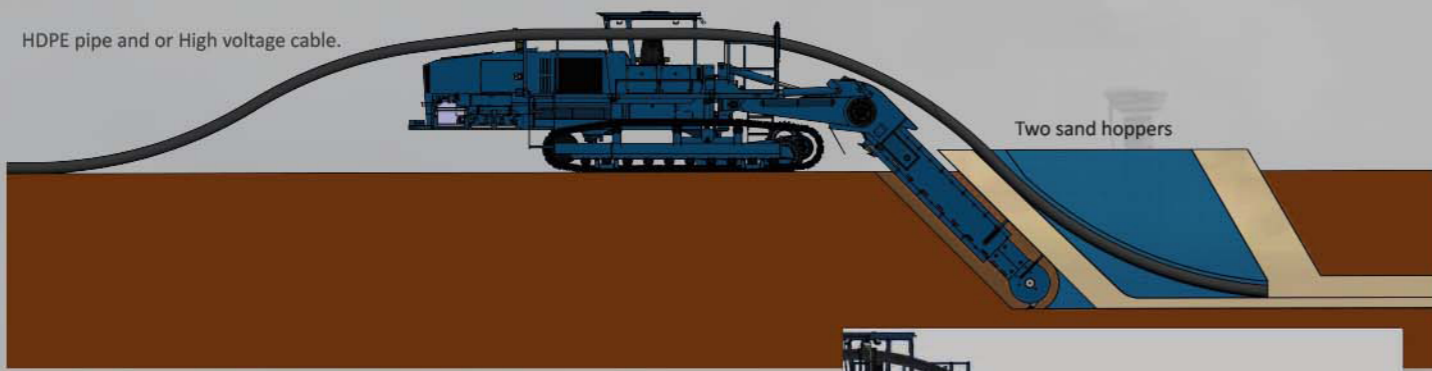


HDPE pipe and or High voltage cable.



Two sand hoppers



The machine can be used for rolling out and trenching in different types of cable, this cable can be laid in a sand bed with both top and under cover.



The machine can also be used to trenching different diameter pipes, this varies up to 800 mm with a minimal disturbance of the soil structure. Other diameters and specials on demand.

Partners :



The activities of Dutch Orange Trading are the supply of parts, raw materials and maintenance work.



The activities of Dutch Orange Equipment are the supply and production of extruder lines and trenchers and the associated peripheral equipment.



The activities of Dutch Orange Marine are the supply of Buoys, Radar systems and other related systems.

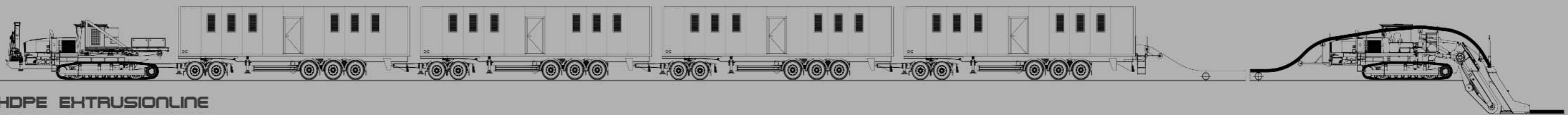


Dutch Orange Europe B.V.
de Darink 1
NL-4756CR Kruisland
The Netherlands
Tel +31 (0) 165- 326454
info@dutchorangeeurope.com



HDPE PIPE PRODUCTION & TRENCHING SOLUTIONS





HDPE EXTRUSIONLINE

Dutch Orange Equipment is a young company who is dedicated to innovation and development in machines. The focus in the last years was how to create a step forward with HDPE pipelines and on request even as an Antibacterial. The answer to this is the Trencher. A Trencher is driving behind an extrusionline that produces the pipeline, this is also possible when the pipeline has already been produced. The Trencher is specially re-developed for:

- HDPE pipe in line (on request Antibacterial)
- HDPE pipe on a rol (on request Antibacterial)
- HDPE pipe produced (Stationary) on site
- HDPE pipe produced (Mobile on Tracks or Wheels) in the field
- High Voltage cable
- Steel pipes

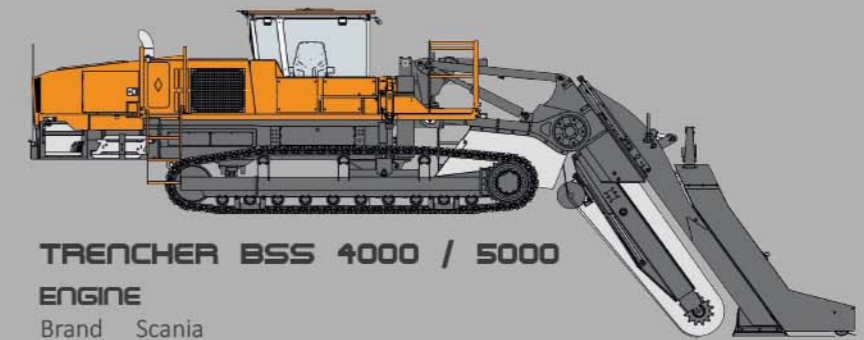
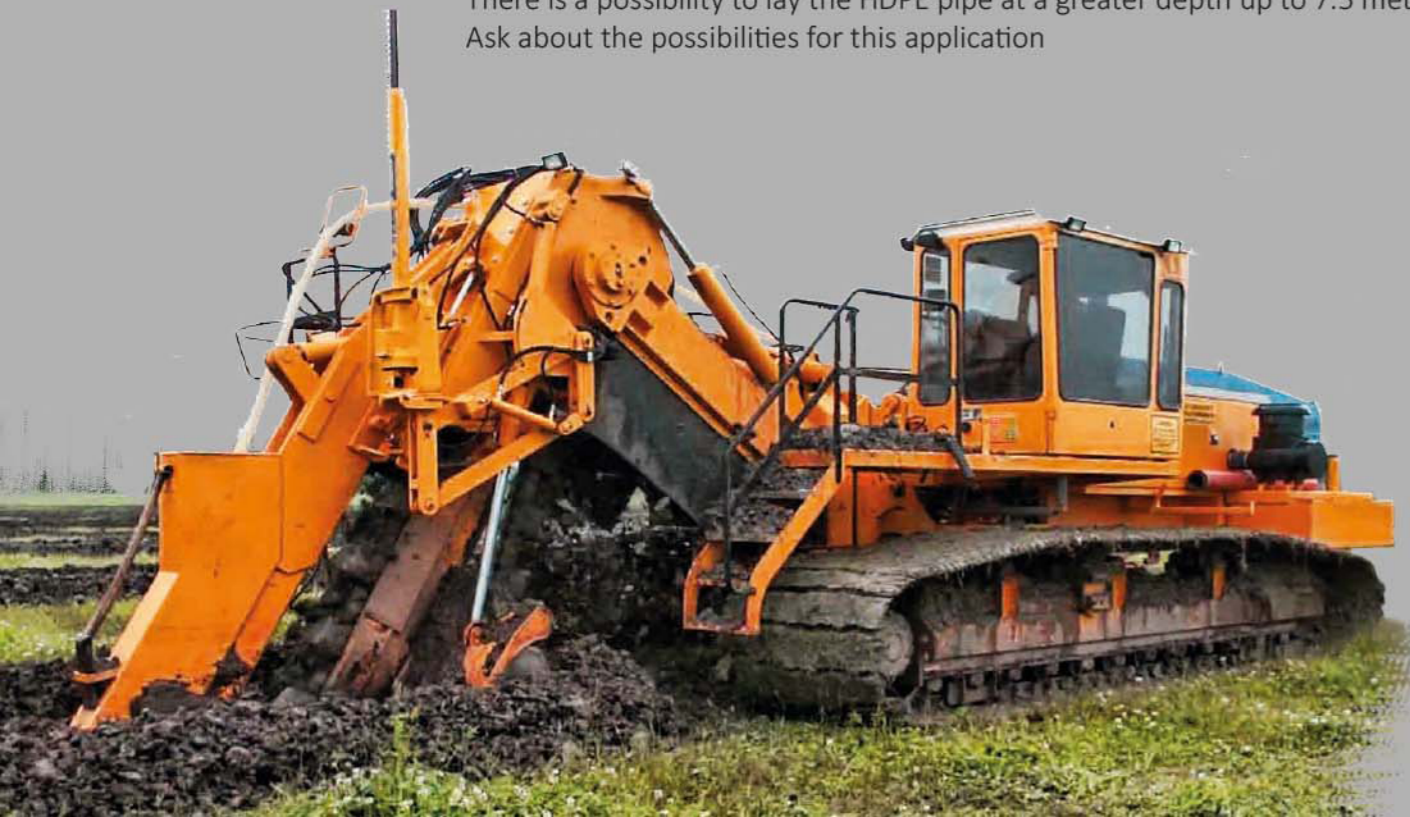
All these developments were to reduce to following:

- CO2 production
- Transport costs
- On site crane activities
- Leadtime of the project



TRENCHER BSV 5000 / 7500

There is a possibility to lay the HDPE pipe at a greater depth up to 7.5 meters. Ask about the possibilities for this application



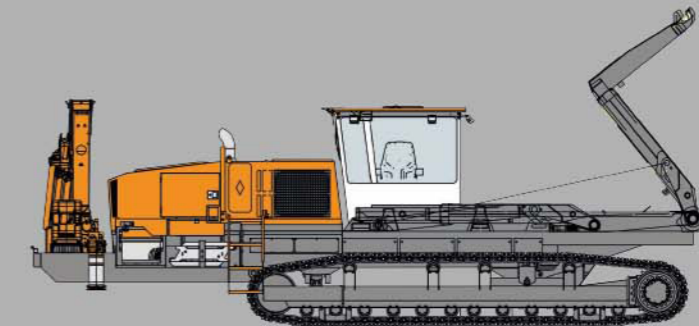
TRENCHER BSS 4000 / 5000

ENGINE

Brand Scania
 Type DC13
 Stage Stage IV Final
 Power 405 kW / 550 hp

TRENCHING SYSTEM

Drive line Hydrostatic drive system- GPS or laser prepared
 Hydraulic motors 2x high torque motors- 2000 cc
 Final drive Lifetime seals
 Trench width 175- 1300 mm
 Depth range 1.500 mm
 Max. trench depth 4.500 mm (7.000 mm deep trenching)
 Control by means of electric joystick- stepless adjustable
 Travel speed 0- 5.000 m/s



DOSC 7700 CARRIER

ENGINE

Brand Scania
 Type DC16
 Stage Stage IV Final
 Power 566 kW / 770 hp

HOOKLIFT SYSTEM

Brand VDL
 Type S25-4750
 Length 4,750 m
 Capacity uptill 75 Ton

CRANE

Brand Hiab X-HIDUO 158 B-3
 Hydraulic Extension Outreach 10,6 m
 Lifting capacity (tm) 15.3

